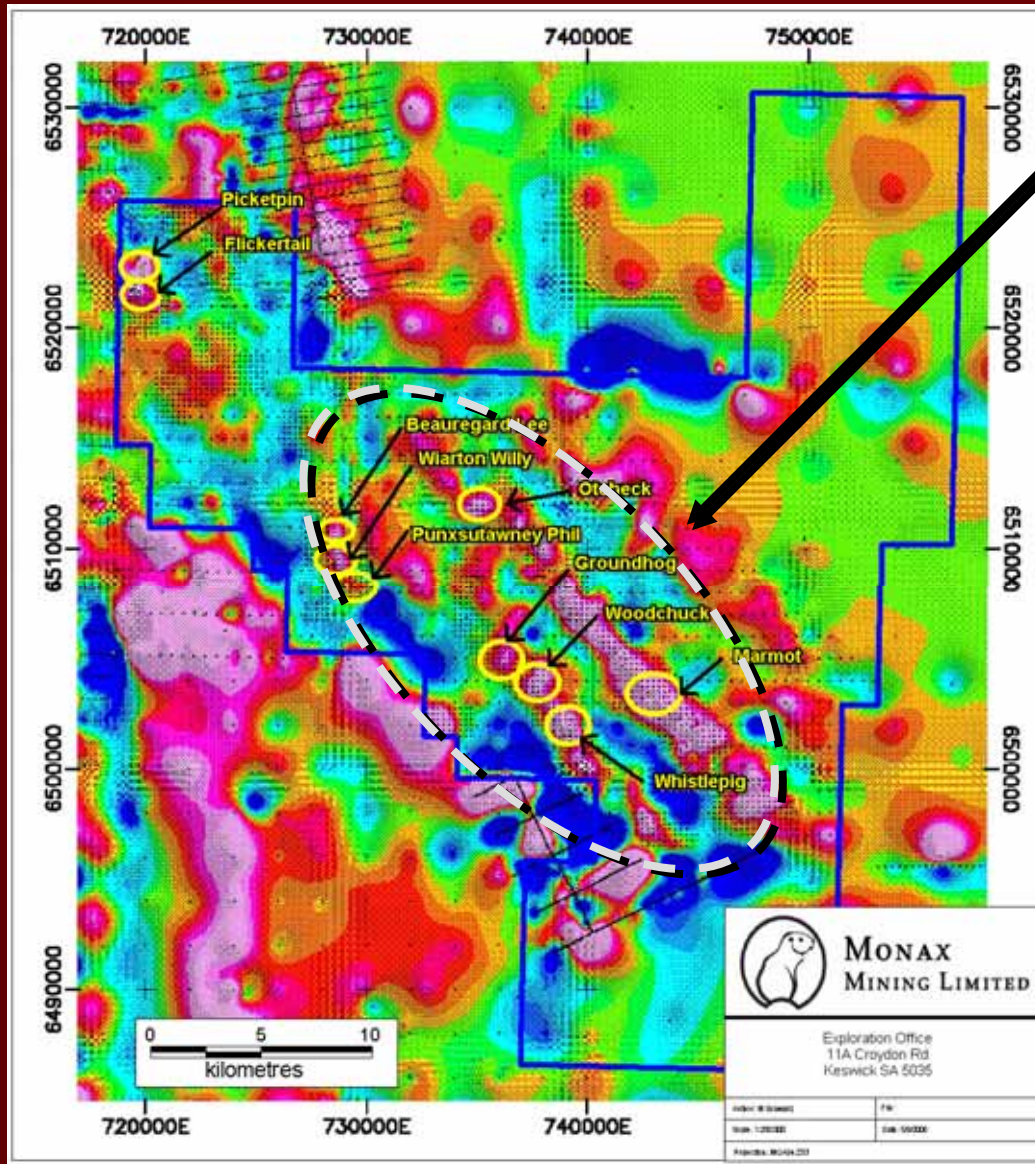




MONAX  
MINING LIMITED

# Punt Hill Copper-Gold Project



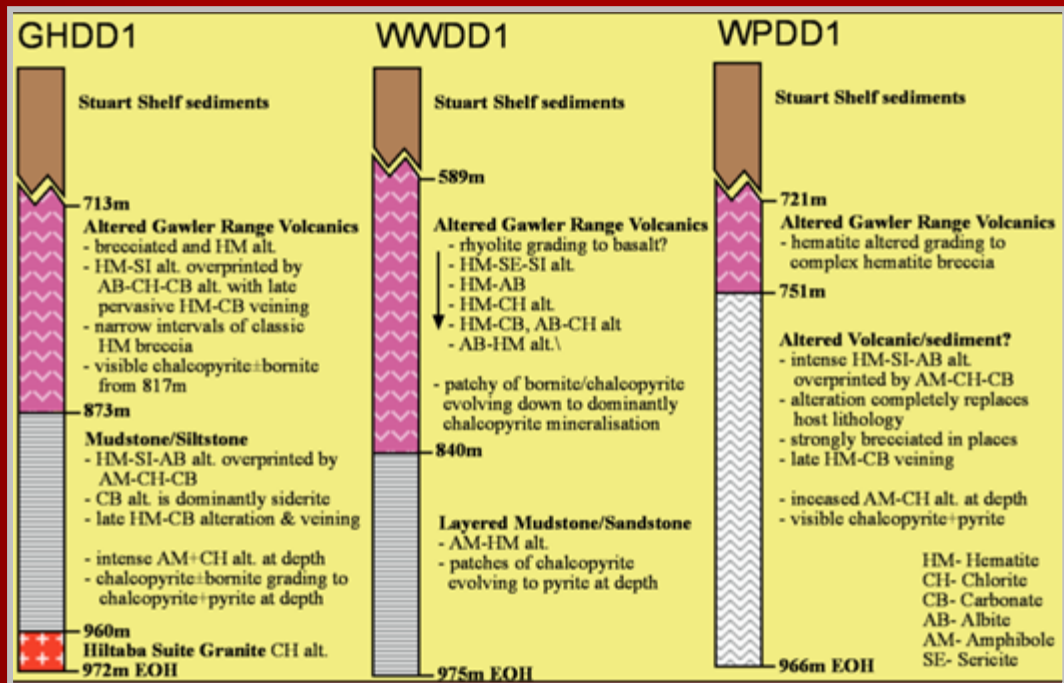
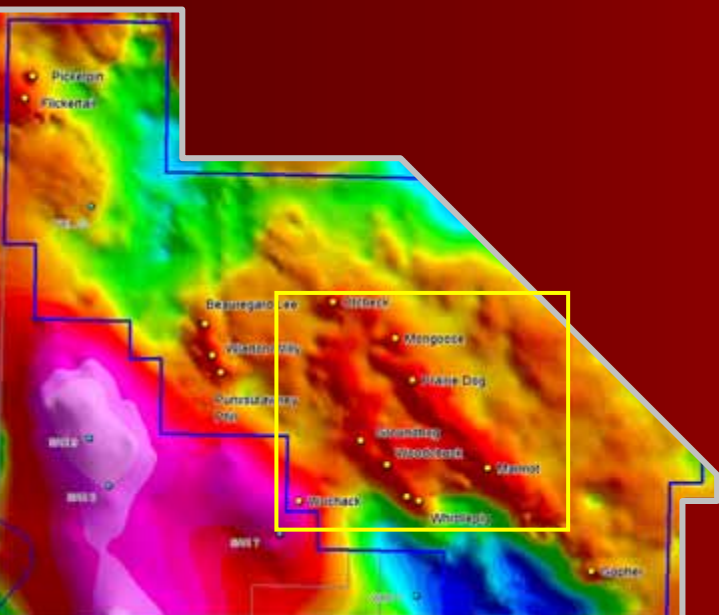
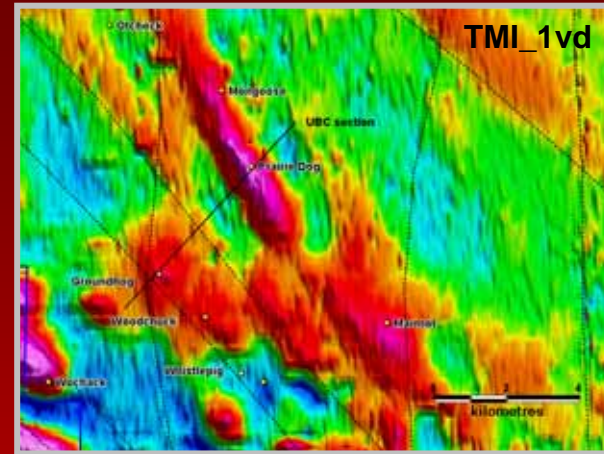
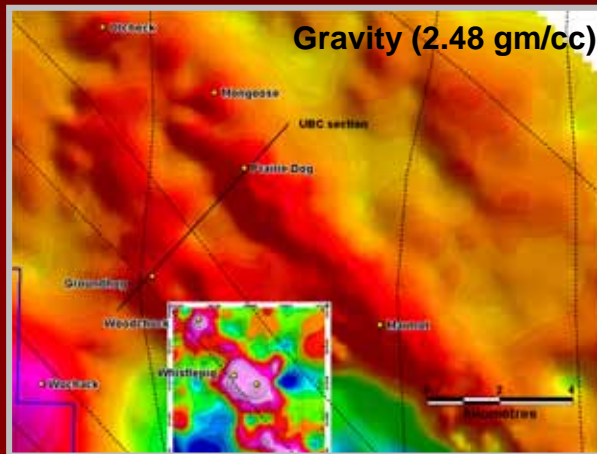
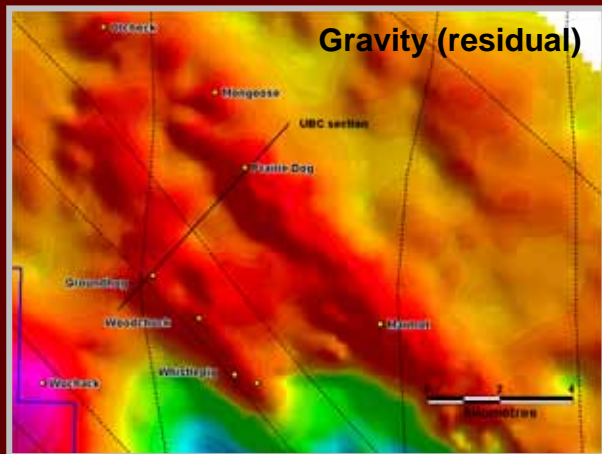


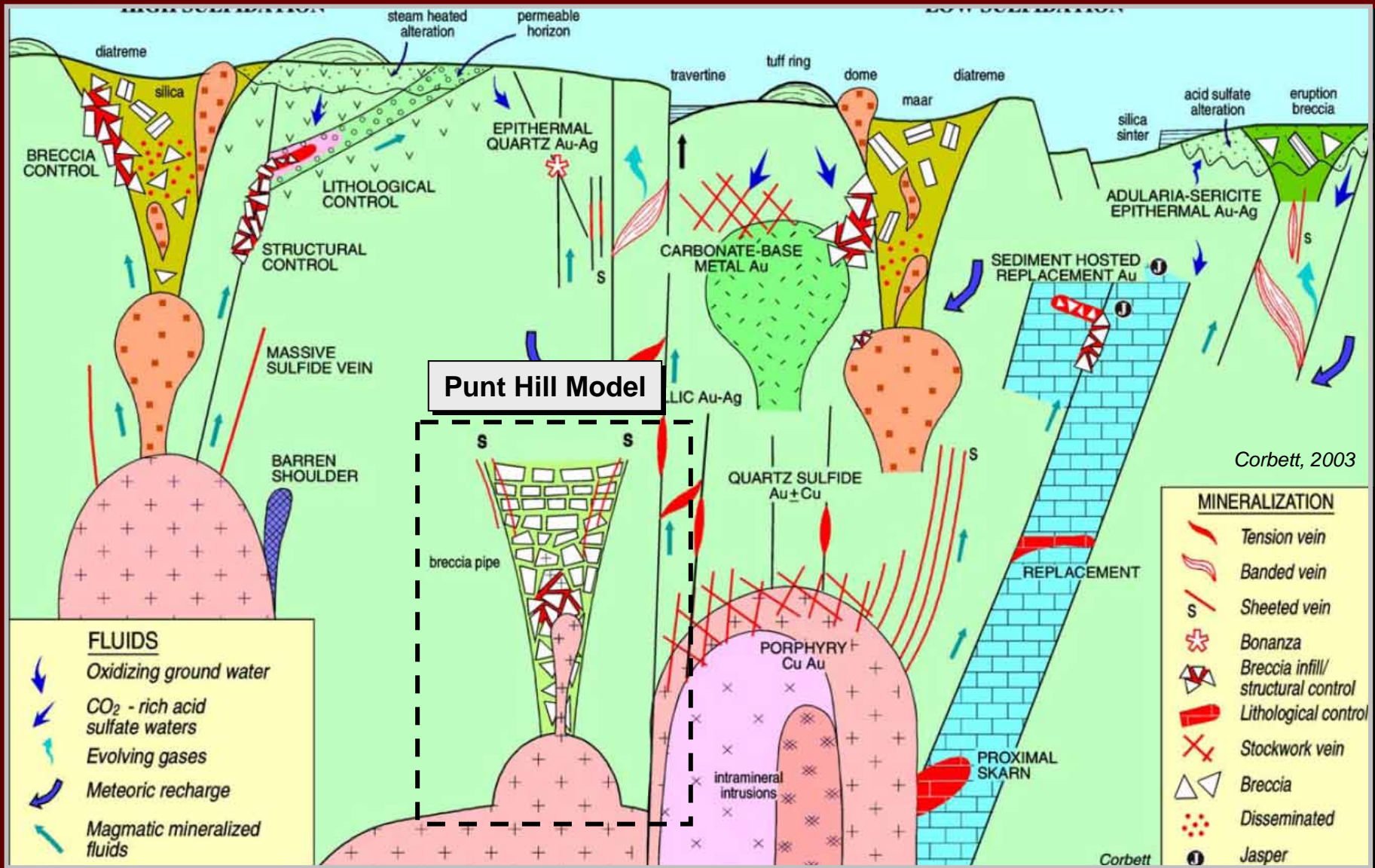
- Main zone of interest is the Groundhog Gravity Trend
- Covers an area of 25 km x 8 km
- Current drilling has demonstrated source of gravity is caused by IOCG style alteration of basement rocks

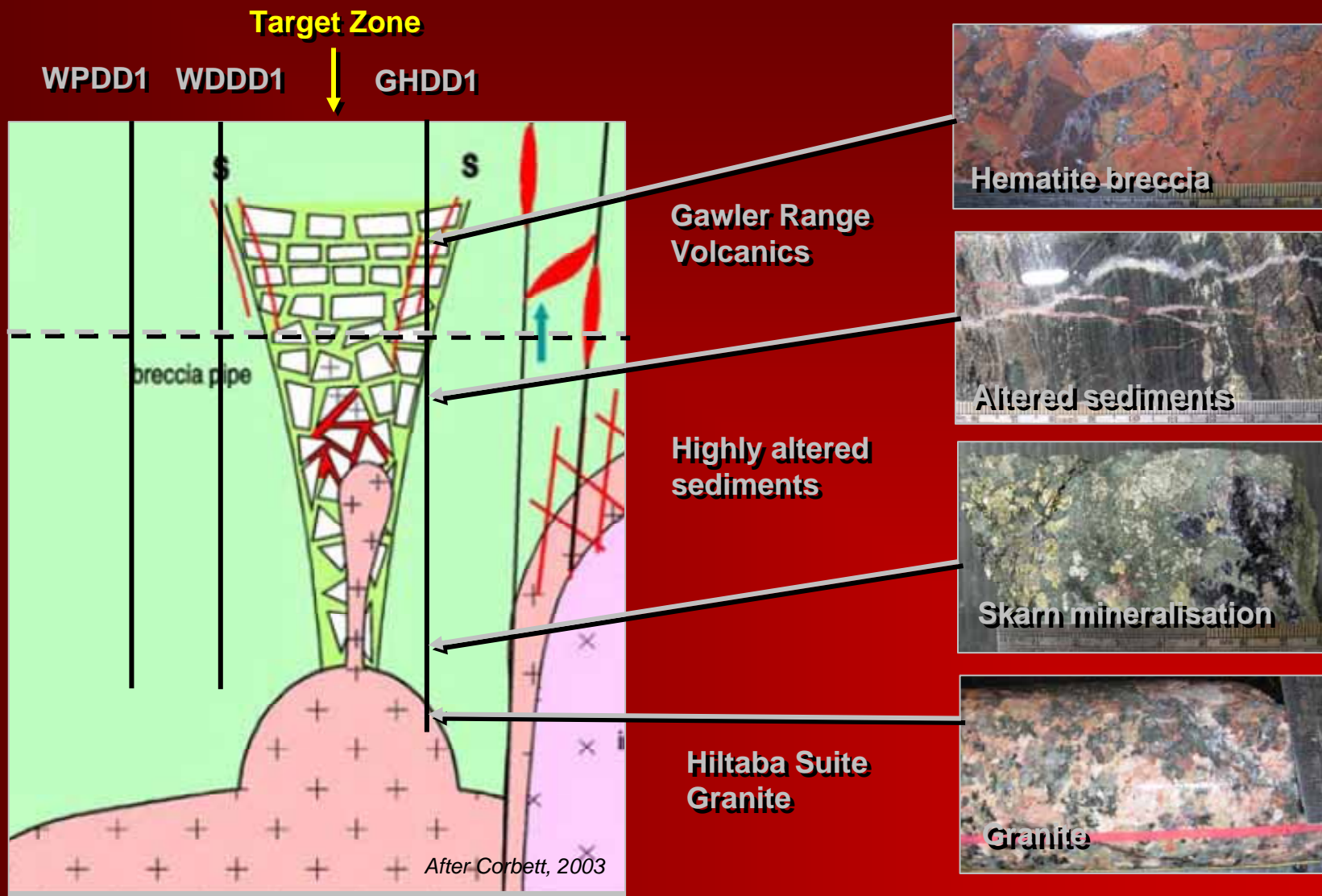
Residual gravity image



Whistlepig, Woodchuck, Groundhog

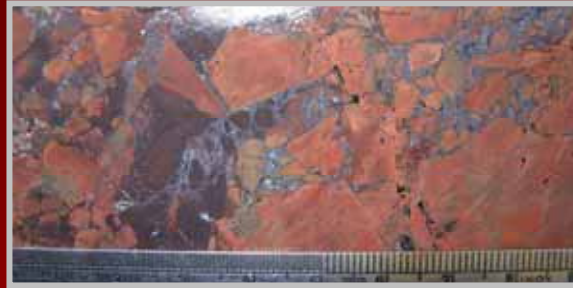
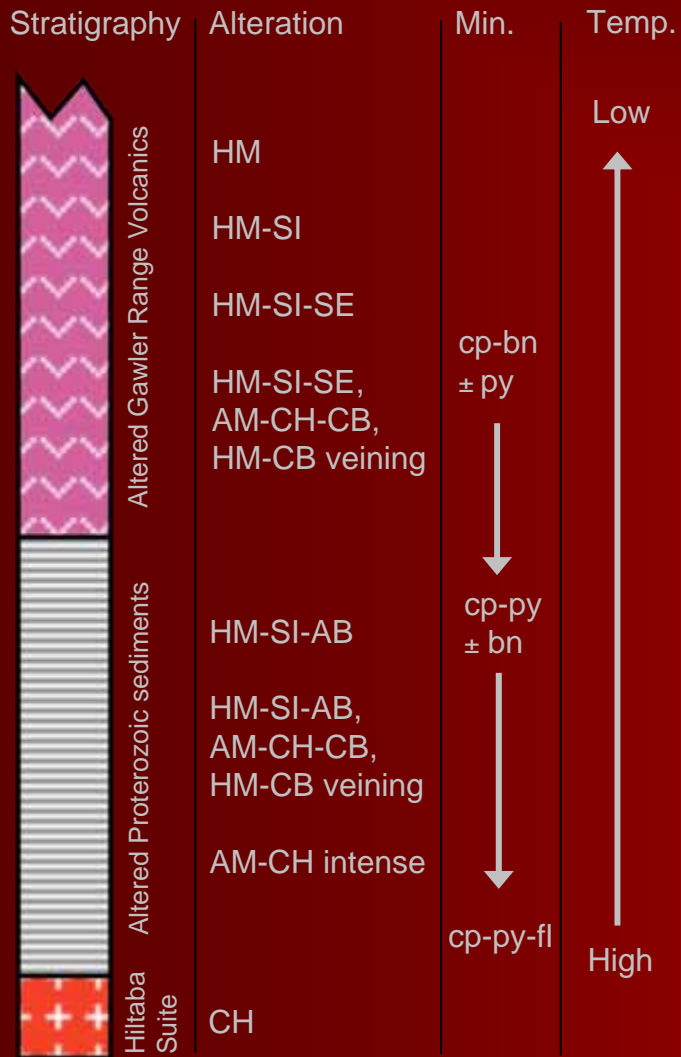








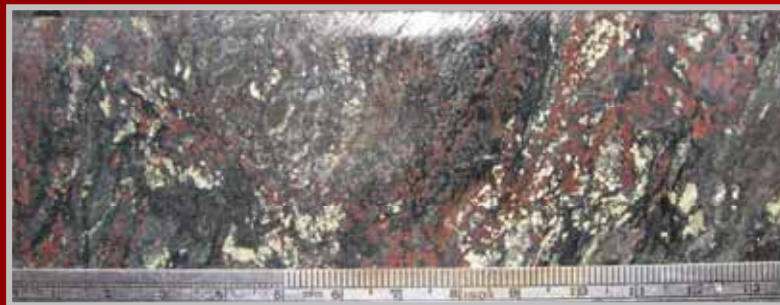
## Mineralisation Model: Groundhog skarn



hematite alteration & brecciation



hematite/albite overprinted by amphibole/chlorite/carbonate with late hematite/carbonate veining



hematite/albite overprinted by amphibole/chlorite/carbonate with chalcopyrite and pyrite



**MONAX**  
MINING LIMITED

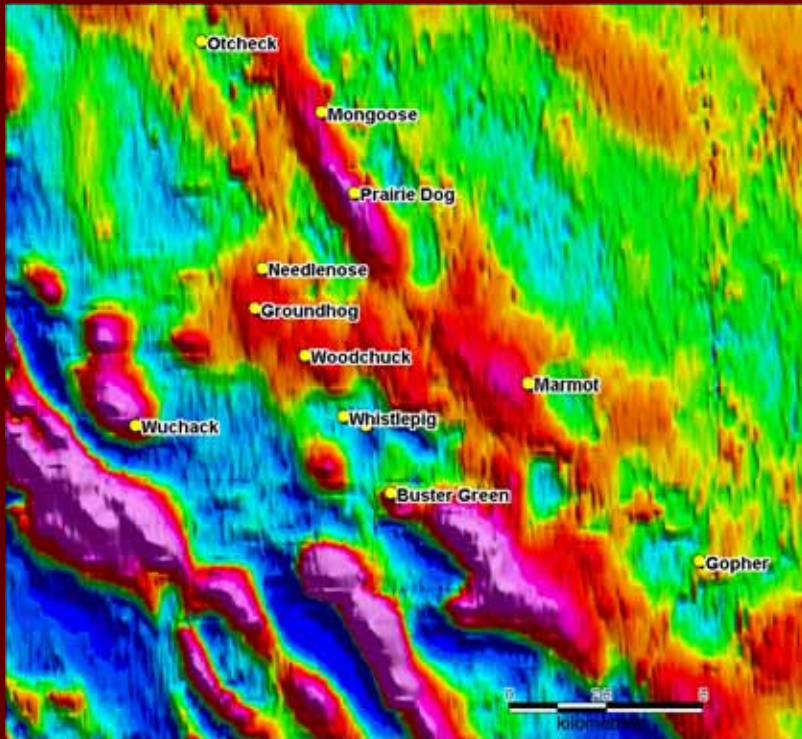
# Punt Hill Copper-Gold Project



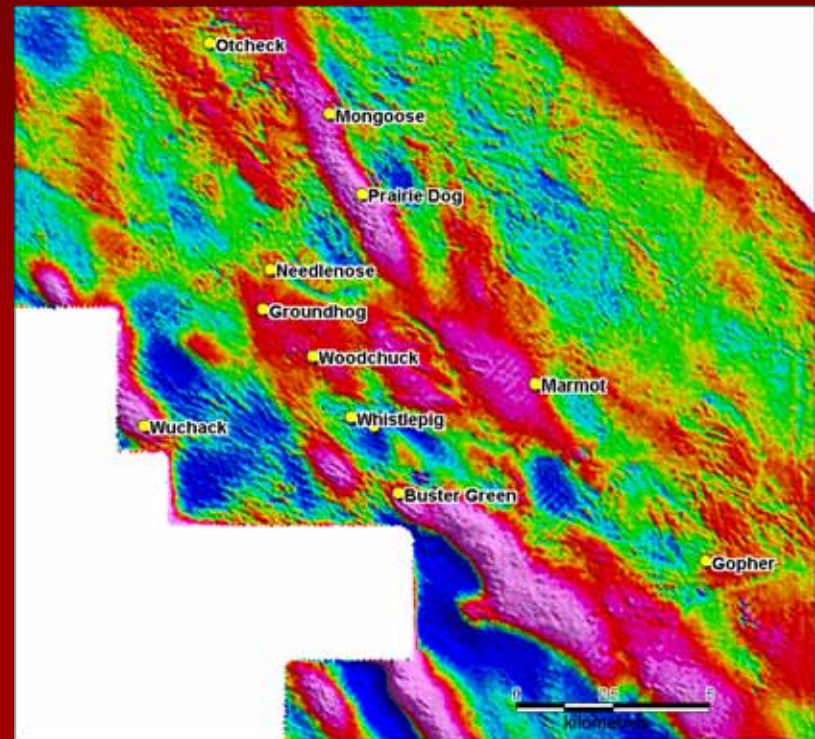
Examples of copper sulphide mineralisation in the Groundhog hole (GHDD1)



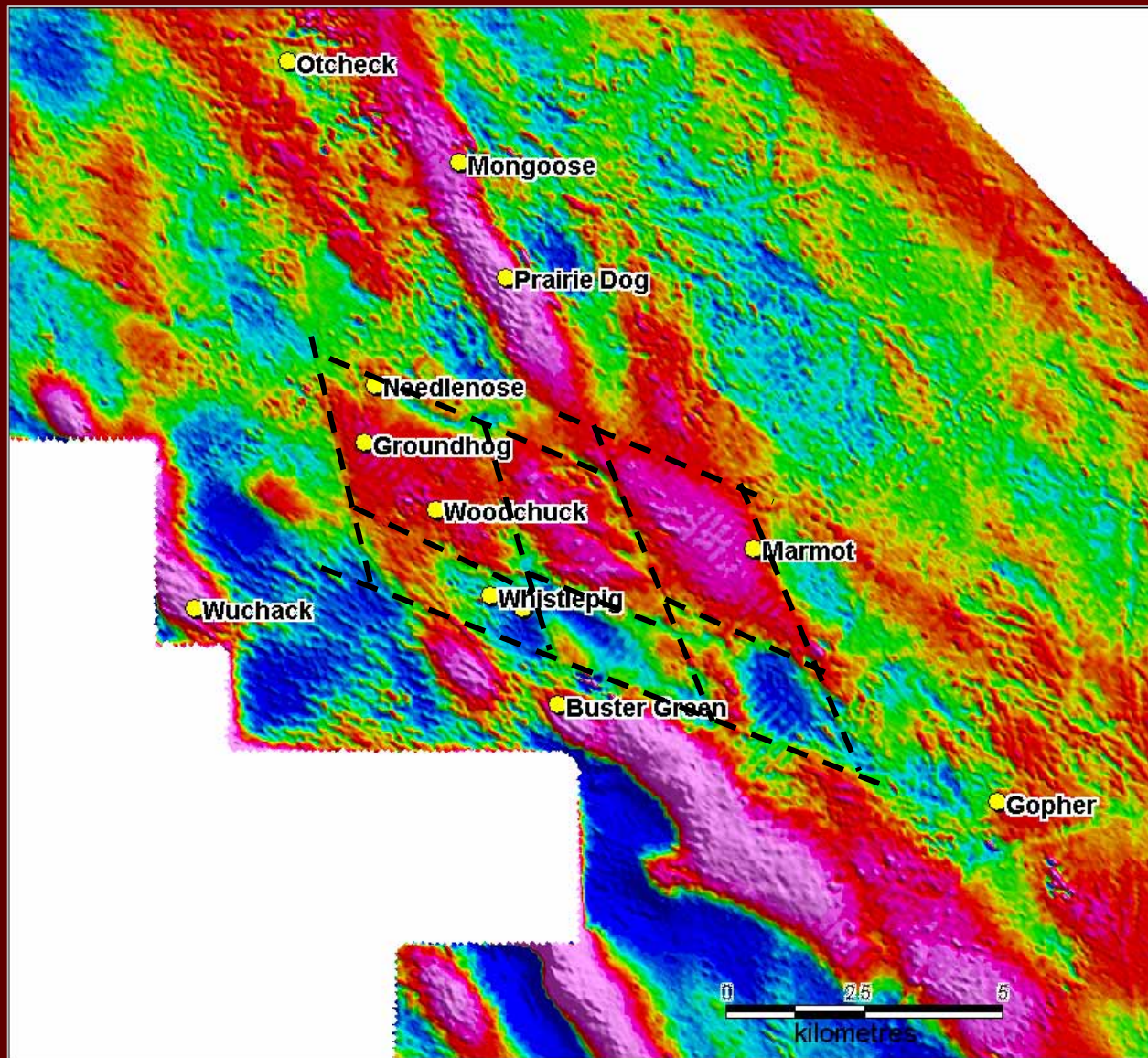
## Old vs New aeromagnetics



400m Residual magnetics



100m Residual magnetics – newly acquired



Fault

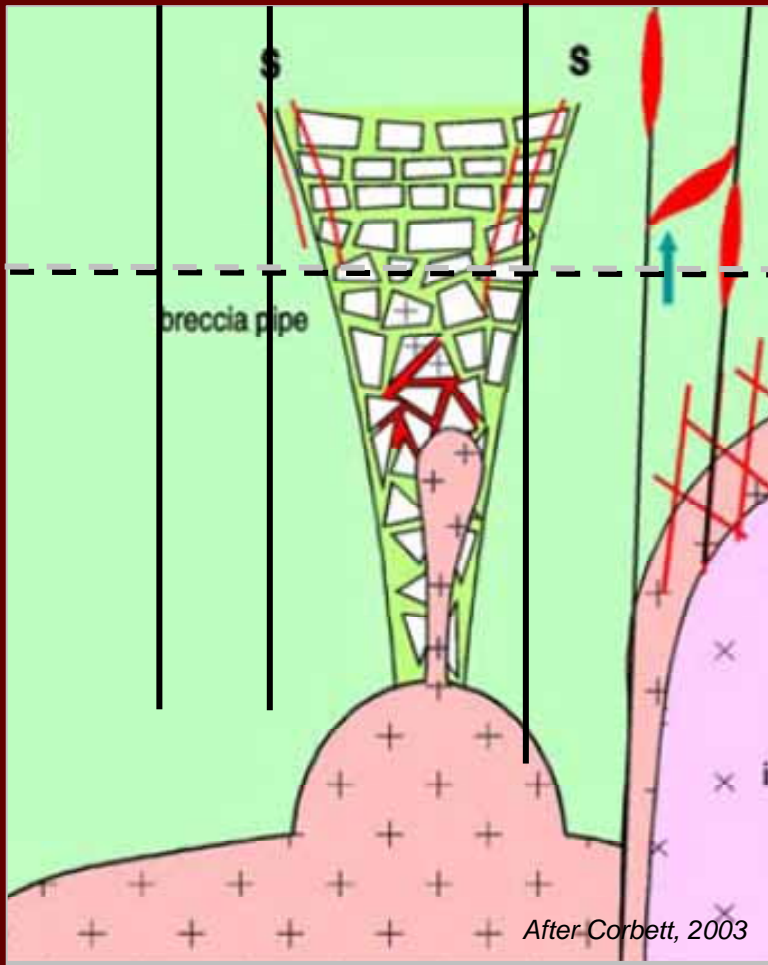
- Strong north-west structural control
- Classic “pull-apart” diamond shaped features
- Appear to control the location of IOCG alteration
- Target intersection of gravity anomalies and structures

100m residual  
magnetics – newly  
acquired



## Target Zone (Structurally controlled)

WPDD1 WDDD1 GHDD1



**Gawler Range  
Volcanics**

**Highly altered  
sediments**

**Hiltaba Suite  
Granite**

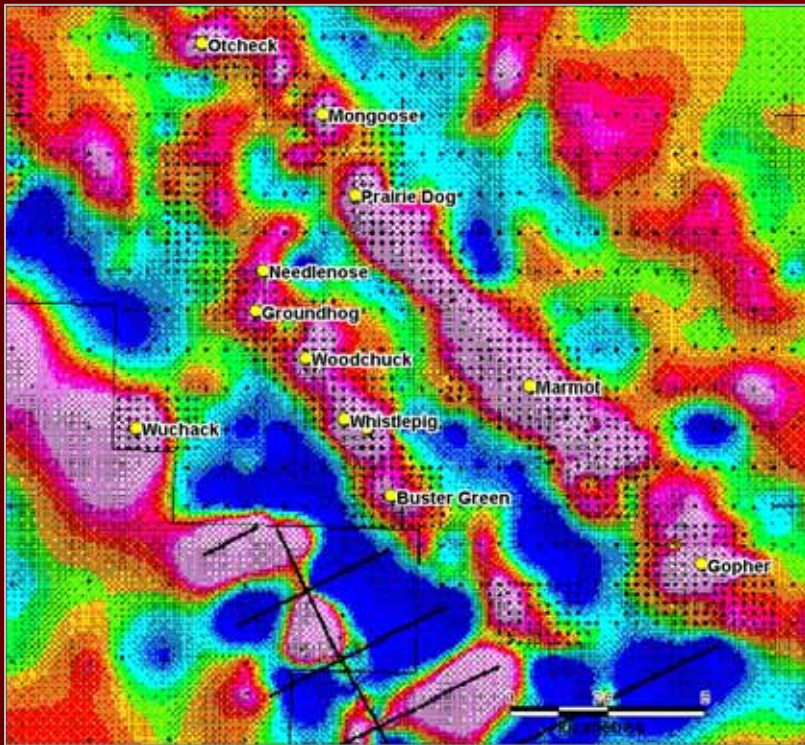
- Breccia pipe = main zone of fluid flow and mineralisation

- Location controlled by major "open space" structures

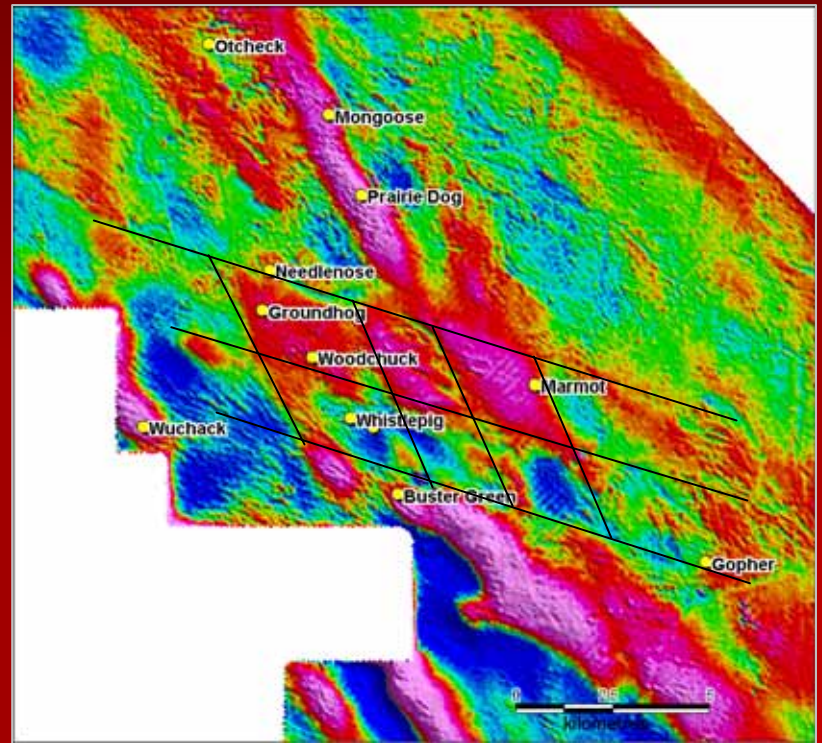
- Groundhog (GHDD1) drill hole closest to "Target Zone" to date



Structurally controlled gravity targets = IOCG targets



Residual gravity



100m Residual magnetics

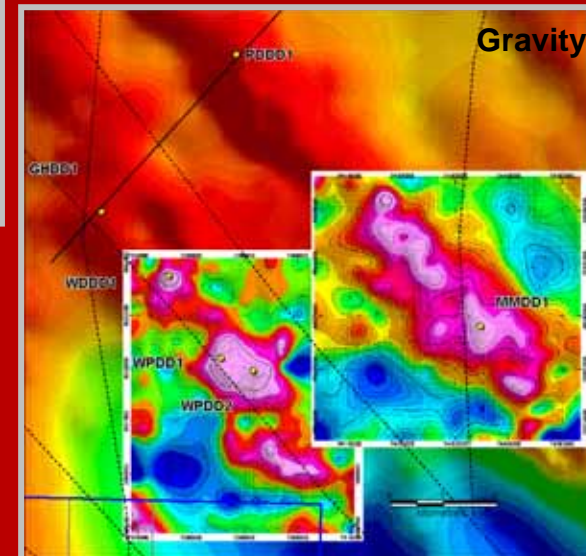
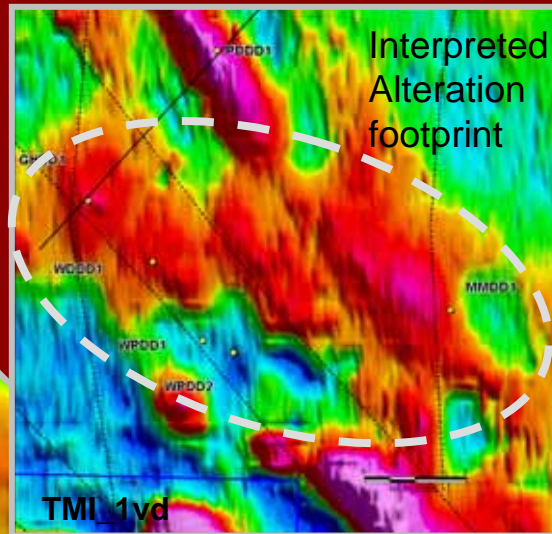
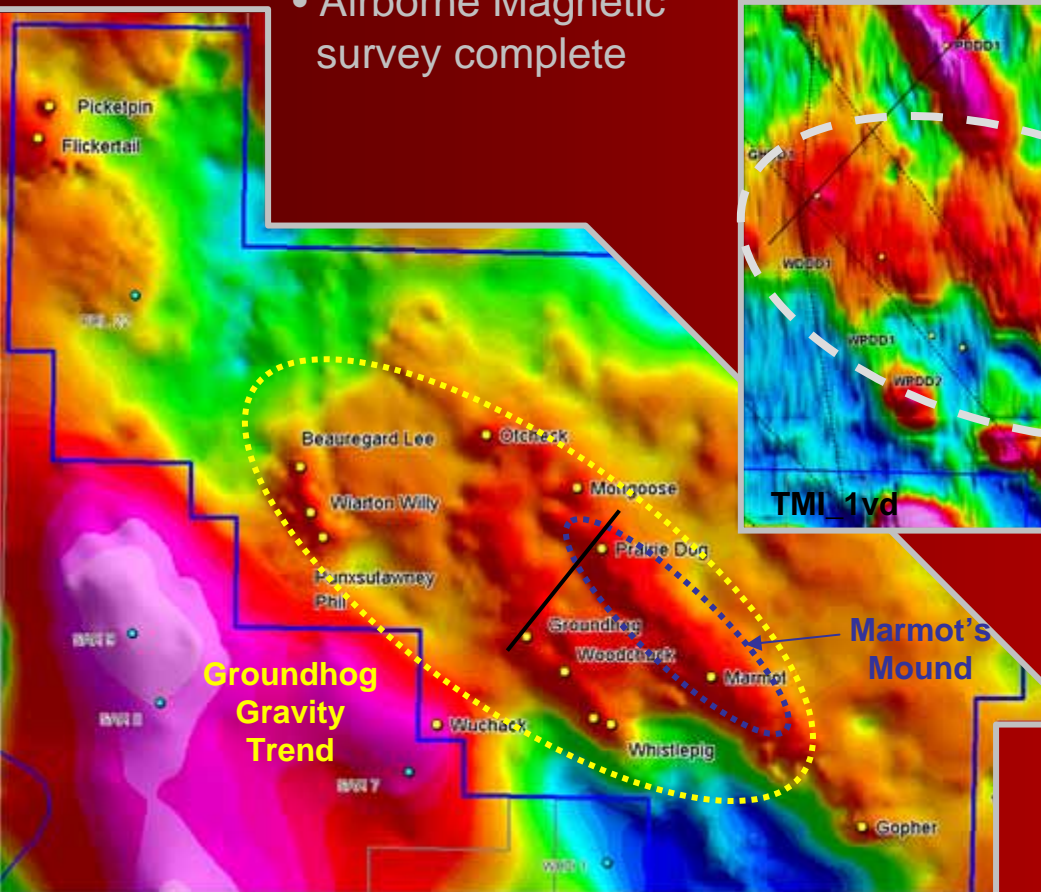


**MONAX  
MINING LIMITED**

# Punt Hill Copper-Gold Project

## Exploration Direction:

- Marmot (MMDD1), testing for alteration along Marmot's Mound
- Fits structurally controlled gravity model
- Infill drilling on the 'Groundhog Gravity Trend'
- Airborne Magnetic survey complete





**MONAX**  
**MINING LIMITED**

ABN 96 110 336 733